

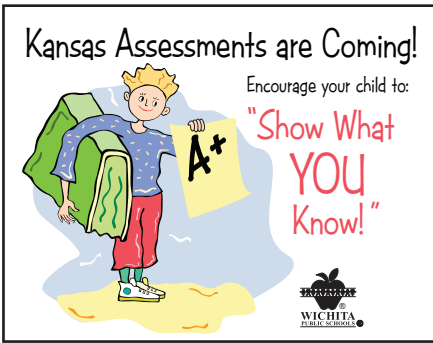


Assessment Postcards

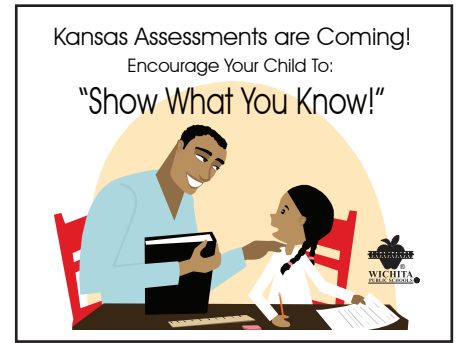
are tools designed to help teachers inform and involve families in the assessment process.

Use these postcards to remind families of upcoming Kansas State Assessment dates or to share ideas on how families can support their children's assessment success.

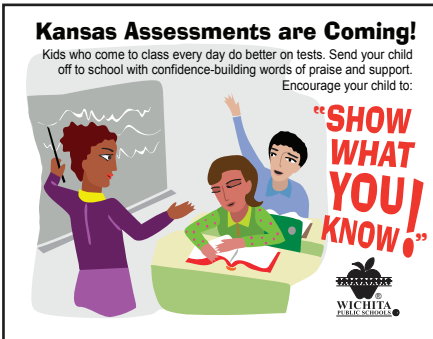
Postcards are available through Family Engagement staff and the Parent Teacher Resource Center.



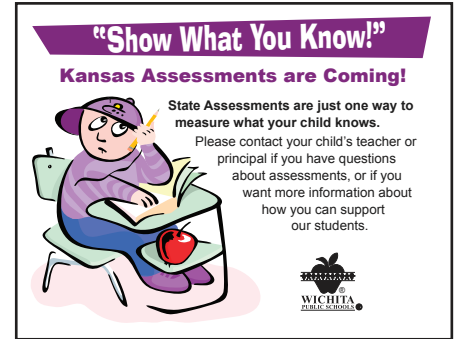
A-1



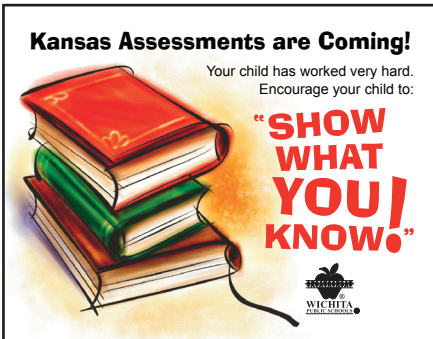
A-2



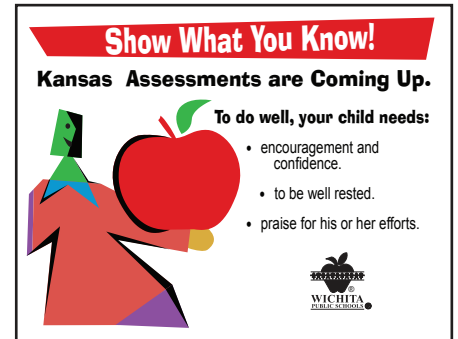
A-3



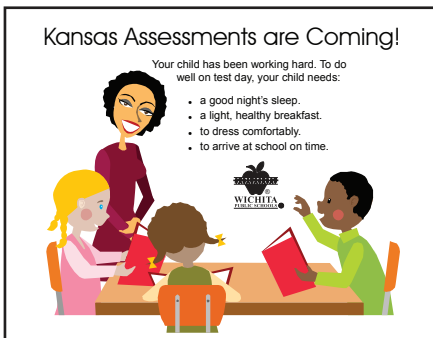
A-4



A-5



A-6



A-7



A-8